



Agencia de
Dezvoltare Regională
Nord



Implemented by

giz Deutsche Gesellschaft
für Internationale
Zusammenarbeit (GIZ) GmbH



Schweizerische Eidgenossenschaft
Confédération suisse
Confederazione Svizzera
Confederaziun svizra

Swiss Agency for Development and Cooperation SDC
Agenția Elvețiană pentru Dezvoltare și Cooperare
Швейцарское управление по развитию и сотрудничеству

Social-economic profile For investment promotion



Balti Municipality

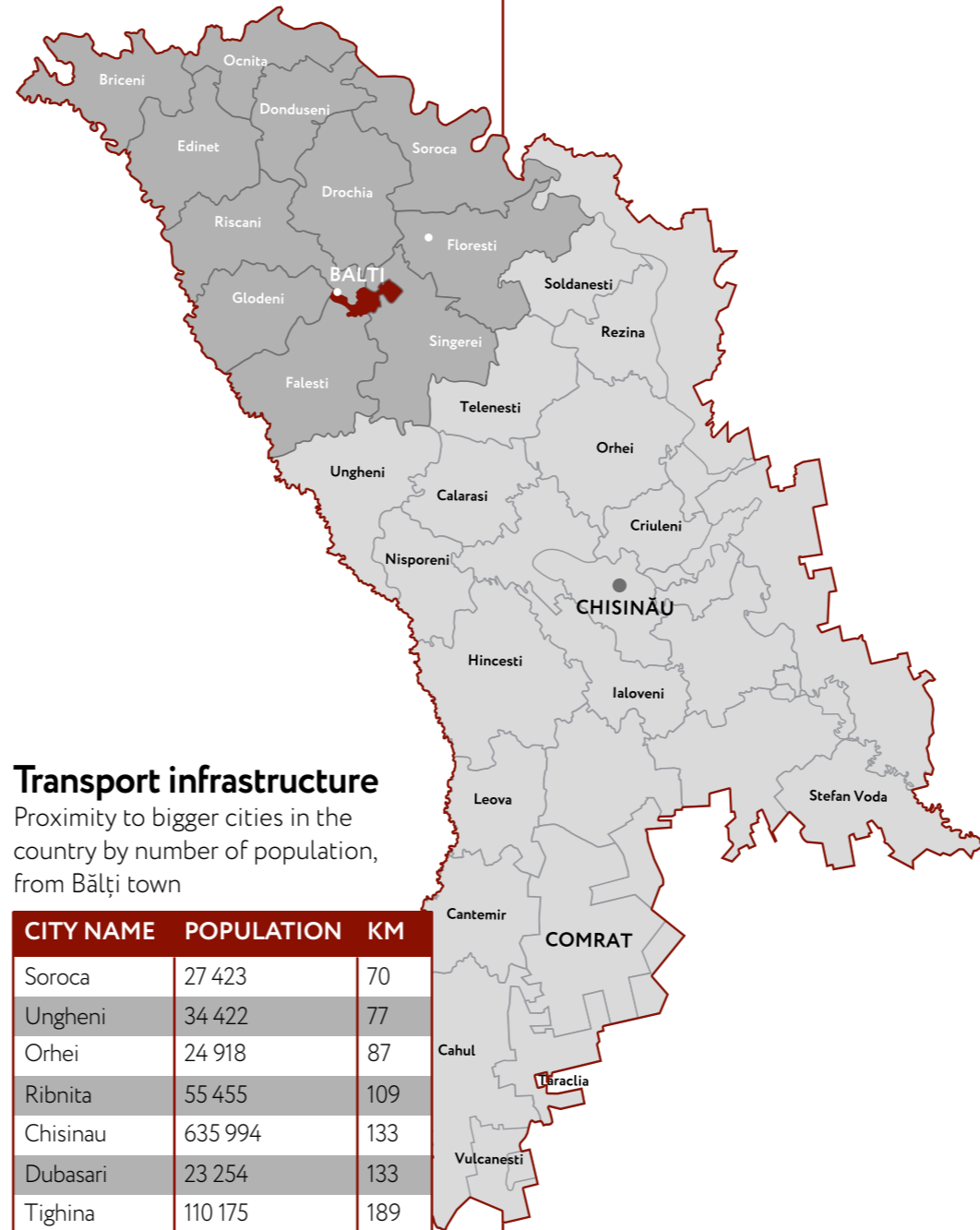


Coordinates (City Hall)	47°76'21.1" N, 27°92'80.7" E
Bordering districts	North-West – Râșcani; South-East – Sângerei; South-West – Fălești; West-Glodeni.
Administrative Units	3 settlements, divided 1 city and 2 administrative-territorial units of level I: 1 municipality Bălți; 2 villages Elizaveta and Sadovoe.
Resident population, 2018, regional share %	151 791 (15,58%)
Present population, 1 January 2021, inhabitants	121 656 – Bălți Municipality 3 326 – Elizaveta village 1 312 – Savovoe village
Land area total: area in km ² , regional share %	78,01 (0,78 % of the total area of NDR)
Agricultural land	33,31
Localities lands	26,69
Forest Reserves (Forest lands and intended for environmental protection)	5,3
Industrial settlements and other uses (Land for industry, transport, communications and other special purposes)	9,9
Area covered by water	2,75
Rezerve fund	0,06
Natural resources	Aquatic resources: Rivers: Răut (largest tributary of Nistru river) with tributary Răuțel, Copaceanca and Flămîndă; Aquatic basins: City Lake, Komsolskoe Lake, Hunters and Fishermen Lake, Strâmba Lake; Solid mineral resources: clays deposits used for the production of bricks and tiles; Soils: typical chernozemic soils slightly to moderately humiferos.
Google map link	Map

Transport infrastructure

Proximity to bigger cities in the country by number of population, from Bălți town

CITY NAME	POPULATION	KM
Soroca	27 423	70
Ungheni	34 422	77
Orhei	24 918	87
Ribnita	55 455	109
Chisinau	635 994	133
Dubasari	23 254	133
Tighina	110 175	189
Tiraspol	157 000	192
Cahul	34 492	277

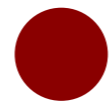


Proximity to key transport routes, airports, and ports (distance from Bălți town, km)

Airport	1 16 km fom city center – Bălți-Leadoveni International Airport, Râșcani (commercial cargo and chartered services); 2 30 km - Free International Airport Mărculești, Florești (cargo); 3 145 km - Chișinău International Airport (passenger/ cargo).
Railway	Two railroad stations: 1. Bălți-City Station; 2. Bălți-Slobozia Station (Northern station). Regular rail connections: 1. Ocnița (North); 2. Rezina (East); 3. Ungheni (South-East), as well as to Chișinău.
European Road	E583 – România(Sculeni) - Moldova - Ukraine (Mohyliv); Crossing Moldova: · R 16: Sculeni (End of concurrency with E58) – Răuțel · M5 (M14): Răuțel – Bălți – Edineț · R 8: Edineț – Otaci
Express road (international)	M5 - Border with Ukraine - Criva - Bălți - Chisinau - Tiraspol - border with Ukraine (M14-Brest/Belarus-Odessa/Ukraine route)
National roads	Immediate access to national roads: R6 - Chișinău - Orhei – Bălți; R13 Bălți – Șoldănești – Râbnîța; R13 Bălți – Florești – R14; R14 Bălți – Sarateni – M2; R16 Bălți – Fălești – Sculeni – Ungheni.
Port	330 km to Giurgiulești International Port (South Danube River)
Utilities	
Gas	YES
Electricity	YES
Water Supply	YES
Sewerage system	YES
Telecommunication	YES

Distance to border crossing points, km

Type of BCP	Location	Distance, km	Border Crossing Point
Railway Crossing Points	North	104	Ocnița - Sokireanî (Ukraine)
	North	118	Larga (Briceni) - Kelmenți (Ukraine)
	North-East	107	Vălcineț - Mohyliv - Podilskyi (Ukraine)
	South	335	Giurgiulești - Reni (Ukraine)
	South	317	Giurgiulești - Galați (România)
	West	78	Ungheni - Iași (România)
	North-West	137	Criva - Mamaliga (Ukraine)
Road Crossing Points	North	107	Otaci - Mohyliv - Podilskyi (Ukraine)
	North	104	Ocnița - Sokireanî (Ukraine)
	North	121	Larga (Briceni) - Kelmenți (Ukraine)
	North	101	Briceni-Rossoșanî (Ukraine)
	South-East	228	Pervomaisc - Kuciurgan (Ukraine)
	South-East	260	Tudora - Starokazacie (Ukraine)
	South	335	Giurgiulești - Reni (Ukraine)
	South	317	Giurgiulești - Galați (România)
	West	70	Costești - Stâncă (Romania)
	West	62	Sculeni - Sculeni (Romania)
	West	157	Leușeni - Albița (Romania)
North-East	137	Criva - Mamaliga (Ukraine)	



Greenfield and brownfield locations. Short descriptions.

Free Economic Zones

Free Economic Zone Bălți (www.zelb.md) was established in 2010 for a period of 25 years. It hosts 78 residents in 18 subzones with a total area of circa 286,42 ha, namely:

1. Bălți Municipality (3 subzones – 104,9 ha);
2. Strășeni Municipality (5 subzones – 56,5 ha);
3. Căușeni City (8,5 ha);
4. Orhei Municipality (8,0 ha);
5. Cahul Municipality (2 subzones – 40,4 ha);
6. Ștefan-Vodă City (8,9 ha);
7. Cimișlia City (20,0 ha);
8. Albițeștii Vechi the Village (1,5 ha);
9. Rezina City (8,7 ha);
10. Chișinău Municipality (2 subzones – 18,0 ha);
11. Pârâta village, Dubăsari district (11,02 ha).

The FEZ “Bălți” hosts relevant residents: such as Drăxlmaier Automotive, Gebauer & Griller, SEBN Sumitomo Electric Bordnetze, Sammy Cablaggi / Kablem, and Coroplast Harness Technology.

FEZ „Bălți” has 3 sub-zones located in the Bălți municipality:

SUBZONE NR.1 (Dovator)

Total Area of the Subzone:	2,02 ha
Address:	Str. Dovator no.86, Bălți municipality
Legal status:	Private property
Main Resident:	DRAEXLMAIER AUTOMOTIVE” LTD, “MAGNETEC”
Activities to be conducted:	production of electric cabling and electronic components for the automotive industry

SUBZONE NR.2 (Industrială)

Total Area of the Subzone:	10,35 ha
Address:	Str. Industrială no.4, Bălți municipality
Legal status:	Private property
Main Resident:	DRAEXLMAIER AUTOMOTIVE” LTD; GEBAUER & GRILLER
Activities to be conducted:	production of electric cabling for the automotive industry

SUBZONE NR.3 (Aerodromului)

Total Area of the Subzone:	136 ha
Address:	Str. Aerodromului nr.1, Bălți municipality
FEZ Regime:	90 ha
General Regime:	46 ha
Main Resident:	GEBAUER & GRILLER
Activities to be conducted:	production of electric cabling for the automotive industry.

Also, a close Subzone of FEZ Bălți is situated in Albinețul Vechi locality, Făleşti district just 38 km from Bălți, was created in 2018 based on the wiring factory for the automotive industry of the “Sammy Cablaggy” Company, part of the Italian group “Kablem Group”.

Others close FEZ:

- 30 km - The Mărculești Free International Airport Special Status Area (MFIA)** - airport with a dual-purpose airfield (military and civil) for passenger and freight international transportation, is situated in Florești having a total area of 265 ha. The status of FEZ was established in 2008 for a period of 25 years.
Possible use (Destination): Providing ground handling services and air transport; wholesale trade, except for goods excluded from the civil circuit; industrial production of goods; processing agri-food production; sorting, packaging, marking and other similar operations with goods transited through the Free Airport.
Residents: State Enterprise “Mărculești International Airport”, “Malaga Maintenance Centre”, „Aim Air” SRL, “Valan International Cargo Charter” Joint Venture LLC, „Aim Helicopter Plant”, „Aim Handling”, „Tehavia”, „Aeroport Service”, “Alanar-Grup”.
- 76 km - Free Economic Zone Ungheni** – was created in 2002 for a 42 years period, consists of 12 subzones with a total area of 145,2 ha (public and private owned) in:
 - Ungheni Municipality (4 subzones – 49,57 ha);
 - Zagarancea village (2 subzones – 14,60 ha);
 - Soroca Municipality (2 subzones – 20,62 ha);
 - Hîncești Municipality (1,99 ha);
 - Nisporeni city (2 subzones – 26,11 ha);
 - Călărași City, Tuzara village (32,27 ha).**Possible use (Destination):** industrial production; sorting, packing, marking and other similar operations with goods in transit; foreign trade; other auxiliary activities, such as utilities, warehousing, construction, catering, etc.
Residents: Lear Corporation (production of covers for cars, Netherlands), Cabling Integration System (manufacture of electronic cables, France), Euro Yarns LTD (manufacture of synthetic fibers, Belgium), Sarco Engineering (services on construction and repair), local companies from textile industry (Covoare-Ungheni, Filatura Ungheni, Alpha Omega Confexim, Carpeta MD, Covoare-Lux, Moldabela Trade etc).
- 109 km - The free economic zone “Otaci-Business” (FEZ)** from Otaci (Ocnîța) established in 1999 for a period of 25 years, on a 32,17 ha area, consisting of 2 subzones, with 12 residents, which is currently used only at the level of 10-30%.
Possible use (Destination): production of plastic packaging and the manufacture of garments, furniture manufacturing, foreign trade, wood and sand processing, biofuel production, etc.
Residents: ISC Steel Suct Structuri SRL (manufacture of metal structures and carpentry for construction), AIK Petroleum (wholesale of solid, liquid and gaseous fuels and derived products), Trade Log SRL (storage activities), SRL ZERATUS PRIM (Manufacture of crude oil products), UZINA EXPERIMENTALA SA REZONANTA (manufacture of builders’ carpentry and joinery), BP RAFINARIE (wholesale of solid, liquid and gaseous fuels and derived products), SRL TERMOLEMN (sawmills and planing of wood), SRL ECOCHIM-GRUP (manufacture of other basic organic chemicals).

Industrial Parks

Industrial park “S.A. Răut” is located in Bălți, specializing in machinery and equipment production, electrical and electronic equipment manufacture.

Industrial park “S.A. Răut”	
Address:	Str. Decebal 13, Bălți municipality
Total Area of the Subzone:	9,50 ha
Free available area:	27 000 m ² – production area 3 000 m ² – administrative area
Investment Type:	Brownfield
Legal status:	Public property

Main Resident:	RĂUT” Joint Stock Company, IM Elektromanufacturing (production of inductive electronic components, modules and electrical assemblies for automotive industry), ICȘ „Rif-Acvaapar” SA (produced the hydro-acoustic navigation apparatus), “MOLLTEX GROUP” (textile).
Activities to be conducted:	R&D, production of inductive electronic components for automotive industry, the hydro-acoustic navigation apparatus, textile.

Other closest ones:

- 74 km - Industrial Park “Edinet” situated in Edineț.
Destination (possible use): Production and storage;
- 44 km - Industrial park “Bioenergagro” is situated in Tarigrad, Drochia District.
Destination (possible use): gas production from biomass.

Business incubators

Bălți has no Business Incubators.
The closest ones:

- 23 km - Business incubator Sângerei;
- 71 km - Business incubator Soroca.

Multifunctional Platforms

No

Other relevant locations

- Pro-Business Nord (PBN)** is a national, non-governmental, non-political, non-profit organization offers its training, consulting and informational services to small and medium businesses, non-governmental organizations (NGOs), and individuals in the city of Bălți and the rural areas across the Northern part of Moldova;
- The Women Business Association from Bălți** is an NGO that encourages the social and economic activism of women and young people in the Northern Region of the Republic of Moldova through the promotion of entrepreneurship;
- The Public Research Institute for Field Crops “Selectia”** was officially founded on January 1, 1944 in the former USSR, since then 349 varieties and hybrids have been developed, out of which 160 were officially recognized, including but not limited to 17 varieties of winter wheat, 15 varieties of autumn barley, 16 varieties of peas, 18 varieties of soybeans, 12 varieties of beans, 18 hybrids of sunflower, and 6 varieties of sugar beet.

Assets subjects to privatization:
Joint Stock Company Scientific Research Institute “Rif-Acvaapar” - narrow specialization of hydro-acoustic equipment manufacturer.

Investments opportunities:

- Residential zone - Nicolae Iorga str., Bălți municipality with the cadastral no. 0300301477, 40 ha (greenfield, 8 USD/m²);
- Industrial zone - Lev Dovator str. 86, Bălți municipality, 5 ha (greenfield, 8 USD/m²);
- Industrial zone - Ștefan cel Mare str. 197, Bălți municipality, 3,3 ha (greenfield, 8 USD/m²).



Why to invest, investment incentives

About **150k resident population** (is the 3rd biggest municipality in Moldova), **65% of working age** (the highest rate in NDR);

Bălți is commonly known as **Moldova's northern capital**, serving as a commercial, industrial and cultural hub of the NDR, as well as nationally wise;

Key transport infrastructure in place - Bălți is an epicenter of the national network of roads and railways, being the best-connected node of the NDR's transport network;

Availability of **key investment and business infrastructure** for manufacturing, 3 subzones with FEZ status (100+Ha) and an Industrial Park (10+Ha);

Key utilities available all around the municipality;

The Bălți municipality ranks the **1st place in NDR and 2nd** in the country by active companies' turnover, exports and no. of employees;

Is one of the **leading Moldovan municipalities** in wires & cabling, electrics & electronics equipment manufacturing;

Strong pro-investment incentive provided by local authorities attracted more than a half of foreign capital from NDR in Bălți municipality from divers industries;

Is the **undisputed Moldovan leader** in the agri-food industry production of oils & fats;

Is home for **2 universities, 5 colleges, 5 vocational schools** and **1 Excellence Center**;

During the last 3 years the Bălți LPA is considered by experts (IDIS „Viitorul”) as the **most transparent Local Public Administration in the Republic of Moldova**.

Business environment

Review of major business actors within the municipality (both private and public), by turnover and employment

Economic activity in the Municipality

Year	Total enterprises	Total number of employees	Turnover (M EUR)	Profit (M EUR)	Total export (M EUR)	Investments fixed assets (M EUR)	Remuneration fund (M EUR)	Monthly average salary (EUR)
2016	2 514	32 921	758,0	25,6	3,3	-	77,8	247,3
2017	2 586	32 503	811	25,9	9,4	59,9	98,7	275,0
2018	2 647	35 122	923,1	33,3	262,8	65	121,1	325,0
2019	2 724	37 212	1 033,0	36,6	308,4	64	140,7	356,3
2020	2 731	35 662	972,8	21,2	257,5	50,3	-	360,6

Top 10 major local private business actors by turnover, 2020

Company Name	Location	Turnover, (M EUR)	Field of activity
INCOMLAC	Bălți, str. Calea Iesilor, 180	32,0	Milk and dairy producer
ANVAR-COM	Bălți, str. Stefan cel Mare, 144	26,3	Wholesale of grain, unmanufactured tobacco, seeds and animal feeds
MAGDALINAS	Bălți, str. Korolenko VL., 6	11,0	Wholesale of beverages
VERIX-GRUP	Bălți, str. Solnecinaia, 37	9,8	Wholesale of wood, construction materials and sanitary equipment
NORDMETAL	Bălți, str. Stefan cel Mare, 76/A	8,7	Wholesale and Recycling of metal waste
DRUMURI-BĂLȚI	Bălți, str. Decebal, 133	8,7	Construction of roads and motorways
STROYLUX	Bălți, str. Feroviarilor, 38/A	8,0	Wholesale of wood, construction materials and sanitary equipment
CENTAUR	Bălți, str. Decebal, 134/A	8,0	Import and wholesale of food, alcoholic and non-alcoholic beverages
AUTO-INTERNATIONAL	Bălți, str. Sofia, 27/1	6,3	Wholesale of wood, construction materials and sanitary equipment
BĂLȚI-GAZ	Bălți, str. Sf. Nicolai, 43	6,2	Distribution of gaseous fuels through mains

Top 10 major foreign private business actors by turnover, 2020

Company Name	Location	Turnover, (M EUR)	Field of activity
FLOAREA SOARELUI	Bălți, str. 31 August, 6	95,2	Production of vegetable oils
GG CABLES & WIRES EE	Bălți, str. Industriala, 4	80,4	Manufacture of other electronic and electric wires and cables
DRA DRAEXLMAIER AUTOMOTIVE	Bălți, str. Dovator Lev, 86	56,4	Manufacture of electrical and electronic equipment for motor vehicles
FOURCHETTE-M	Bălți, str. Alexandru cel Bun, 5	26,5	Retail sale in non-specialized stores of food, beverages or tobacco predominating
AQUATRADE	Bălți, str. Aerodromului, 14/A	23,2	Wholesale and Production of beverages
KNAUF-GIPS	Bălți, str. Stefan cel Mare, 178	19,9	Manufacture of cement, lime and plaster
KNAUF-GIPS	Bălți, str. Eminescu M. bd., 12	12,4	Manufacture of underwear
BASARABIA-NORD	Bălți, str. Victoriei, 90/A	11,8	Production of meat and poultry meat products
EXCEL MANUFACTURING	Bălți, str. Pacii, 5	4,9	Manufacture of underwear
CB - TEX	Bălți, str. Eminescu M. bd., 12	4,7	Manufacture of workwear

Top 10 major public institutions by turnover, 2020

Company Name	Location	Turnover, (M EUR)	Field of activity
FURNIZAREA ENERGIEI ELECTRICE NORD	Bălți, str. Strii, 17/a	91,4	Electricity trading
RETELELE DE DISTRIBUTIE NORD	Bălți, str. Stefan cel Mare, 180/A	32,1	Electricity distribution
CET-NORD	Bălți, str. Stefan cel Mare, 168	15,6	Supply of steam and air conditioning
SPITALUL CLINIC BĂLȚI	Bălți, str. Decebal, 101	13,1	Hospital care activities
CENTRUL MEDICILOR DE FAMILIE MUNICIPAL BĂLȚI	Bălți, str. Decebal, 101	3,7	General hospital care activities
SPITALUL DE PSIHIATRIE BĂLȚI	Bălți, str. Gagarin lu., 114	3,7	Hospital care activities
INSTITUTIA PUBLICA UNIVERSITATEA DE STAT "ALECU RUSSO" DIN BĂLȚI	Bălți, str. Puskin, 38	3,1	University higher education
Regia "APA-CANAL-BĂLȚI"	Bălți, str. Ciarupin Ivan, 1	3,0	Water capture, treatment and distribution
DIRECTIA DE TROLEIBUZE DIN BĂLȚI	Bălți, str. Decebal, 132	2,7	Water capture, treatment and distribution
DIRECTIA REPARATII SI CONSTRUCTII DRUMURI BĂLȚI	Bălți, str. Decebal, 126	2,2	Non-hazardous waste collection

Top 10 major business actors by export, 2020

Company Name	Location	Total export value (M EUR)	Type of property	Field of activity
DRA DRAEXLMAIER AUTOMOTIVE	Bălți, str. Dovator Lev, 86	130,3	Foreign private	Manufacture of electrical and electronic equipment for motor vehicles
GG CABLES & WIRES EE	Bălți, str. Industriala, 4	61,6	Foreign private	Manufacture of other electronic and electric wires and cables
FLOAREA SOARELUI	Bălți, str. 31 August, 6	24,6	Joint venture	Production of vegetable oils
MAXMANSERV	Bălți, str. Eminescu M. bd., 12	12,5	Foreign private	Manufacture of underwear
MAXMANSERV	Bălți, str. Stefan cel Mare, 144	8,6	Private local	Wholesale of grain, unmanufactured tobacco, seeds and animal feeds
KNAUF-GIPS	Bălți, str. Stefan cel Mare, 178	6,2	Foreign private	Manufacture of cement, lime and plaster
EXCEL MANUFACTURING	Bălți, str. Pacii, 5	3,7	Foreign private	Manufacture of underwear
NATURAL-GRUP	Bălți, str. Stefan cel Mare, 79/2	1,1	Private local	Wholesale of grain, unmanufactured tobacco, seeds and animal feeds
CB - TEX	Bălți, str. Eminescu M. bd., 12	0,9	Foreign private	Manufacture of workwear
STROYLUX	Bălți, str. Feroviarilor, 38/A	0,9	Private local	Wholesale of wood, construction materials and sanitary equipment

Dominant branches of industry by total revenues, 2020

INDUSTRY BRANCH NAME	REVENUES (M EUR)	No of companies	No of employees
Production of vegetable oils	95,2	1	497
Electricity trading	91,4	2	102
Manufacture of other electronic and electric wires and cables	80,4	1	629
Manufacture of electrical and electronic equipment for motor vehicles	56,4	2	4 756
Wholesale of grain, unmanufactured tobacco, seeds and animal feeds	48,6	45	213
Retail sale in non-specialized stores of food, beverages or tobacco predominating	42,5	189	1 388
Wholesale of beverages	38,4	7	818
Wholesale of wood, construction materials and sanitary equipment	36,6	51	460
Electricity distribution	32,1	1	1 547
Milk and dairy production	32,0	2	990
Road freight service	26,2	112	1 151
Wholesale of wood, construction materials and sanitary equipment	22,4	76	544
Manufacture of underwear	20,4	6	1 972
Manufacture of cement, lime and plaster	19,9	1	106
Hospital care activities	18,4	3	2 120
Import and wholesale of food, alcoholic and non-alcoholic beverages	16,5	40	380
Supply of steam and air conditioning	16,1	2	494
Construction work for residential and non - residential buildings	13,9	73	888
Production of meat and poultry meat products	11,9	3	370
Wholesale of sugar, chocolate and sugar products	11,3	9	215

Dominant branches of industry by number of companies, 2020

INDUSTRY BRANCH NAME	No of companies	Turnover (M EUR)
Rental and operation of own or leased real estate	229	10,4
Retail sale in non-specialized stores of food, beverages or tobacco predominating	185	42,4
Road freight service	112	26,2
Maintenance and repair of motor vehicles	93	2,6
Beverage serving activities	91	1,6
Retail sale of clothing in specialised stores	80	2,5
Wholesale of wood, construction materials and sanitary equipment	76	22,4
Construction work for residential and non - residential buildings	73	13,9
Wholesale of wood, construction materials and sanitary equipment	51	36,6
Retail sale of furniture, lighting equipment and other household articles in specialised stores	47	5,9
Wholesale of grain, unmanufactured tobacco, seeds and animal feeds	45	48,6
Retail trade of motor vehicle parts and accessories	43	8,1
Import and wholesale of food, alcoholic and non-alcoholic beverages	40	16,5
Retail sale of cosmetic and toilet articles in specialised stores	39	1,2
Dental care activities	38	1,0
Accounting, bookkeeping and auditing activities; tax consultancy	37	0,8
Plumbing, heat and air-conditioning installation	36	3,0
Hairdressing and other beauty treatment	35	0,2
Other retail sale of new goods in specialised stores	33	3,6
Other credit granting activities	31	2,2

Number of employed persons by type of entities (public / private)

Year	No of companies		No of employees	
	Public	Private	Public	Private
2016	31	2 462	7 237	24 628
2017	30	2 504	7 611	24 254
2018	30	2 553	7 398	27 408
2019	38	2 670	8 201	28 770
2020	40	2 688	8 015	27 503

Information on the economical historical background, lost or almost lost industries but with potential to be rehabilitated, past specializations etc. Historically Bălți was known for producing tobacco, the locality also had many vineyards and orchards.

Most of the city's industry focused on food processing, notably in the production of flour, sugar, and wine. Manufacturing of furniture and agricultural machinery also played an important role in Bălți's economy. The service sector has developed after 1989 to cover the basic needs of the population.

TOP 10 employers, 2020

Company Name	Location	No of employees	Type of property	Field of activity
DRA DRAEXLMAIER AUTOMOTIVE	Bălți, str. Dovator Lev, 86	4 740	Foreign private	Manufacture of electrical and electronic equipment for motor vehicles
RETELELE DE DISTRIBUTIE NORD	Bălți, str. Stefan cel Mare, 180/A	1 547	Public	Electricity distribution
SPITALUL CLINIC BĂLȚI	Bălți, str. Decebal, 101	1 493	Public	Hospital care activities
INCOMLAC	Bălți, str. Calea Iesilor, 180	990	Privat local	Milk and dairy producer
MAXMANSERV	Bălți, str. Eminescu M. bd., 12	735	Foreign private	Manufacture of underwear
GG CABLES & WIRES EE	Bălți, str. Industriala, 4	629	Foreign private	Manufacture of other electronic and electric wires and cables
EXCEL MANUFACTURING	Bălți, str. Pacii, 5	617	Foreign private	Manufacture of underwear
FOURCHETTE-M	Bălți, str. Alexandru cel Bun, 5	582	Private local	Retail sale in non-specialized stores of food, beverages or tobacco predominating
CENTRUL MEDICILOR DE FAMILIE MUNICIPAL BĂLȚI	Bălți, str. Decebal, 101	538	Public	General hospital care activities
SPITALUL DE PSIHIATRIE BĂLȚI	Bălți, str. Gagarin lu., 114	527	Public	Hospital care activities

Production of main industrial products

Industrial products, unit base	2016	2017	2018	2019	2020
Milk and cream with a fat content of up to 6%, tons	46 327,1	36 794,5	27 818,7	20 370,8	17 829,8
Bread and bakery products, tons	10 263,8	9 014,2	8 705,0	9 440,0	8 186,6
Caught milk, yogurt, kefir, sour cream and other fermented products, tons	8 764,0	8 479,1	7 127,3	7 226,2	6 428,1
Sausages, tons	2 417,3	3 384,3	2 700,8	2 838,5	3 619,7
Flour, tons	1 969,3	2 122,5	2 358,9	2 829,6	2 865,1
Butter, tons	4 216,4	2 900,9	2 231,5	2 216,4	2 335,1
Fresh cheeses, tons	1 739,8	1 824,4	1 494,0	1 981,2	1 971,3
Groats, semolina and agglomerates, tons	1 721,1	1 142,4	1 125,5	893,3	1 664,9
Confectionery, tons	1 345,7	1 368,9	1 427,8	1 739,8	1 653,3
Meat, including poultry, tons	680,7	452,9	771,6	1 086,2	889,3
Feed ready for animal feed, tons	885,3	506,2	438,5	742,5	802,9
Processed and preserved fruits, tons	257,5	256,5	213,4	217,8	193,5

Animal livestock, capita at 1st of January

Species of animals	2017	2018	2019	2020	2021
Rabbits	5 070	5 413	3 947	3 214	2 845
Families of bee-pieces	2 082	2 611	2 849	2 849	2 829
Sheep and goats	2 528	2 721	2 248	1 913	2 428
Swine	1 283	1 706	1 391	1 502	1 306
Cattle	740	799	746	643	590
cows	418	434	346	240	236
Cabaline	107	106	98	79	54

Available resources of agricultural production (yearly harvest in tons)

Agricultural crops	2016	2017	2018	2019	2020
Sugar beet	-	-	4467	2634	1484,7
Sunflower	672,7	699,6	695,6	958,5	633,8
Wheat - total (winter and spring)	812,4	891,0	971,5	818,4	300,5
Grain maize	278,8	176,8	198,0	1172,2	161,8

Investment in long term assets, M EUR

Year	Investments in long term tangible and intangible assets, total	Intangible assets	Tangible assets	..dwellings (residential buildings)	..non-residential buildings	..engineering structures	..machinery and equipment	..transport means	..other tangible assets
2017	59,9	0,2	59,7	0,9	10,9	9,8	29,7	6,2	2,3
2018	65	0,9	64,1	2,9	16,5	12,8	22,7	7,7	1,5
2019	64	0,7	63,2	2,5	7,0	18,2	24,4	9,2	1,9
2020	50,3	0,3	50	2,4	6,8	15,9	14,6	6,7	3,6



Transport of good and passengers



Transport type	2016	2017	2018	2019	2020
Transport of goods, thousand tons	2 421,7	2 871,4	3 333,8	2 974,2	2 750,5
Transport of passengers, thousand passengers	4 619,3	5 517,8	4 841,2	4 764,7	2 629,9

Human resources

Total municipality population by age and gender, inhabitants

Municipality population	2016	2017	2018	Share in total district population, 2018 (%)
TOTAL	151 249	151 507	151 791	
Males	69 487	69 544	69 672	45,9%
Females	81 762	81 963	82 119	54,1%
Under working age (0-15)				14,8%
Males	11 716	11 682	11 648	7,7%
Females	10 922	10 866	10 851	7,1%
Of working age (16-56/61)				64,5%
Males	49 141	48 921	48 921	32,1%
Females	50 247	49 808	49 220	32,4%
Over working age (57/62+)				20,7%
Males	8 630	8 941	9 340	6,2%
Females	20 593	21 289	22 048	14,5%



Qualification structure, in the NDR, thousand persons

		2019	2020
Active	Level of education - total	271,7	261,5
	Higher	48,4	54,7
	Secondary specialized	45,0	42,0
	Secondary professional	63,4	58,2
	Secondary school	55,8	50,2
	Gymnasium	56,6	54,6
Employed	Primary or no education	2,5	1,8
	Level of education - total	260,1	251,1
	Higher	47,7	53,9
	Secondary specialized	44,3	40,6
	Secondary professional	59,6	55,1
	Secondary school	53,3	48,4
Unemployed	Gymnasium	53,0	51,7
	Primary or no education	2,2	1,4
	Level of education - total	11,6	10,3
	Higher	0,7	0,8
	Secondary specialized	0,7	1,3
	Secondary professional	3,7	3,2
	Secondary school	2,5	1,8
	Gymnasium	3,6	3,0
	Primary or no education	0,4	0,4

Number of employed persons
Employed population by economic activities, 2019-2020

	2019	2020
Economic activities – Total	37 212	35 662
C Manufacturing	14 068	13 515
G Wholesale and retail trade; repair of motor vehicles and motorcycles	6 976	6 694
Q Human health and social work activities	3 074	2 982
D Electricity, gas, steam and air conditioning supply	2 660	2 575
H Transportation and storage	2 206	2 177
F Construction	1 678	1 612
P Education	1 394	1 407
L Real estate activities	1 042	944
N Administrative and support service activities	785	724
E Water supply; sewerage, waste management and remediation activities	599	645
I Accommodation and food service activities	811	645
M Professional, scientific and technical activities	458	427
J Information and communication	323	330
A Agriculture, forestry and fishing	395	326
S Other service activities	309	261
K Financial and insurance activities	255	250
R Arts, entertainment and recreation	138	127
O Public administration and defense; compulsory social security	26	21
B Mining and quarrying	15	0



Education and number of graduates by specialties

Universities

Institution	Faculty	Number of graduates (May 2021)
"Alec Russo" Bălți State University (USARB)	Faculty of Philology full-time education/part-time education/master	59/22/53
	Faculty of Real Sciences full-time education/part-time education/master	64/103/69
	Faculty of Sciences of Education and Arts full-time education/part-time education/master	42/107/118
	Faculty of Law full-time education/part-time education/master	52/95/114
	Total	217/327/354
Bălți branch of the "Alexandru Ioan Cuza" University of Iași (Romania)	Bachelor's degree: Engineering Physics	13
	Master's degree: Applied Physics and Communication and Information	11
	Total	24

Vocational Schools

Institution	Specialization	Number of graduates (May 2021)
Vocational School no. 1, Bălți municipality	Electric and Gas welding workers	30
	Moulders and welders and related workers	18
	Locksmith-Sanitary technician	25
	Carpenters and joiners in construction	25
	Universal carpenter / in construction	21
	Plasterer- Tackler	22
Total		141
Vocational School no. 3, Bălți municipality	Basic specialization: Tailor clothing (tailor to order)	50
	Seamstress garment industry 72 (dual education)	72
	Hairdresser	40
Total		162
Vocational School no. 4, Bălți municipality	Electrical fitter for repairing and maintenance of electrical equipment	40
	Locksmith-electrician for repairing and maintenance of electrical equipment	21
	Electrician, Electrical Engineer-Mechanic of vehicles	25
	Automotive mechanic	20
	Professional training courses in the following specialties:	
	Electrical fitter for repairing and maintenance of electrical equipment	10
	Automotive mechanic	15
Total		131
Vocational School no. 5, Bălți municipality	Auto mechanic - Automotive Electrical Engineer	43
	Electrical fitter for repairing and maintenance of electrical equipment	21
	Locksmith-electrician for repairing and maintenance of electrical equipment	19
	Electric and Gas welding workers	18
Total		101

Institution	Specialization	Number of graduates (May 2021)
Light Industry College of Bălți	Machines and apparatus in light industry	16
	Modeling, design and technology of fabric garments	34
	Modeling, design and technology of knitted garments	13
	Hairdressing and cosmetics	42
	Safety and health at work	21
	Interior Design (new specialty from September 2021, not yet graduates)	-
	Marketing (new specialty from September 2021, not yet graduates)	-
	Total	126
Medical College of Bălți	General medicine	35
	Patient-Care/Medical Assistance	115
	Total	150
College of Music and Pedagogy of Bălți	Instrumental interpretation	19
	Choral conducting	4
	Canto	6
	Total	29
„Ion Creangă” Pedagogical College within the “Alecu Russo” State University from Bălți	The college didn't operate between 2016 - 2019 year, and respectively cannot offer the information about graduates. The college recently relaunched its activity, perhaps in May 2022 will be able to provide this information.	-
Polytechnic College from Bălți	Computer	61
	Computer networks	22
	Electromechanics	66
	Automation of technological processes	41
	Metrology and certification of conformity	35
	Radio electronic appliances for household use	18
	Machine building technology	15
	Total	258
Railway Technical College from Bălți	Automated rail transport systems	22
	Rail freight and passenger traffic	23
	Web Application Management	24
	Database administration	28
	Vehicle traffic	25
	Total	122
Center of Excellence in Services and Food Processing	Public food technology	34
	Cook - Waiter	49
	Cashier controller	24
	Cook-Confectioner	41
	Baker	17
	Total	165

Cost of utilities in rayon center

Utility	Unit value	Cost per unit value (EUR)
Electricity	Kw/h	· 6; 10 kV - 0,01 · 0,4 kV- 0,13
Water & sewerage	m ³	· 1,39 · 1
Gas	1000 m ³	· high pressure 616,4 · medium pressure 632,6 · low pressure 714,4
Telephone landline	Monthly fee/local unlimited	7,6
Internet	Monthly fee	14,71 (20 Mbps) - 353,07 (1Gbps)



Major cultural events

Cultural event	Date	Location	Description	Public holiday, yes/no
New Year	1 January	city/village		
Christmas	7-8 January	city/village		
"Martisor" International Music Festival	Frist week of March	city	The festival Mărțișor celebrates the beginning of the spring.	no
International Women's Day	8 March	city/village		yes
Easter	April-May	city/village		yes
Parent's Day	April-May	city/village		yes
Labor Day	1 May	city/village		yes
Victory Day	9 May	city/village		yes
City Day	22 May	city	A public and religious holiday celebrating the patron saint of the city	yes
Independence Day	27 August	city	Independence Day is a national holiday in the Republic of Moldova commemorating the Declaration of Independence of the country, on August 27, 1991.	yes
National Language Day	31 August	city	The National Language Day is a national holiday celebrating the proclamation of the Romanian Language as the official language of the state, on August 31, 1989.	yes
"Unity through Diversity" Republican Festival	September	city	The festival brings together the traditions and folklore of different ethnic groups.	no
"Steluta Bălțiului" Municipal competition	November - December	city	The musical competition of talent youths from Bălți	no
Christmas	25 December	city/village		yes

Tourism, leisure and cultural infrastructure



1. Bălți has a large park area Central Park and "Victoria" Park,
2. The alley of the Classics
3. The monument of Stephen the Great
4. The monument of Mihai Eminescu
5. The monument of Boris Glavan
6. Constantin and Elena Cathedral
7. National theatre Vasile Alecsandri
8. Bălți Museum of History and Ethnography

Relevant contact details

Institution/organization	Address	Contact person, position	Telephone	E-mail
North Regional Development Agency (ADR Nord)	Piața Vasile Alecsandri 8/a, Bălți municipality	Maria Prisacari, Director	+373 23161980	adrnord@adrnord.gov.md adrnord@gmail.com
City Hall Bălți	Piața Independenței str. 1, Bălți municipality	Tatiana Dubițkaia, Interim Mayor	+373 23154614	primaria@balti.md
Territorial Agency Bălți (CNAM)	Sf. Nicolae str. 5A, Bălți municipality	Daniela Revețchi, Director-Adjunct	+373 23163399	at.nord@cnam.gov.md
National Social Insurance House (CNAS)	31 August str., 47, Bălți municipality	Damian Rusu, Head of Division	+373 23122548	secretariat@cnas.gov.md
Free Economic Zone Bălți	Industriala str. 4, Bălți municipality	Marin Ciobanu, Administrator	+373 23188882	office@zelb.md
Industrial park "S.A. Raut"	Decebal 13 str. Bălți municipality	Alexei Onico, Interim Director	+373 23123090	contact@raut.md
Regia „Apă-Canal-Bălți”	Carupin, str. 1, Bălți municipality	Roman Pelin, Administrator	+373 23172435	info@apa-balti.md
Glorin Inginerig third floor,	31 August str, 20A, General Director Bălți municipality	Igor Goliberg, 373 23185100	+373 23188162	info@glorin-ing.md
CET-Nord	Ștefan cel Mare str. 168, Bălți municipality	Marian Brînza Interim Director	+373 23153359	office@cet-nord.md

RED NORD	str. Ștefan cel Mare, 180 A, Bălți municipality	Vasile Prisacari, Administrator	+373 23153100 +373 23153101 +7323153102	anticamera@rednord.md
NGO Pro-Business Nord	31 August Str., 20b Bălți municipality	Elena Rosoșenco, Director	+373 23120038	info@pbn.org.md
The Women Business Association from Bălți	Mihail Sadoveanu Str. 2, Bălți municipality	Tatiana Puga, Director	+373 23160895	afabalti@yahoo.com pugat@mail.ru
Public Research Institute for Field Crops "Selectia"	Calea Ieșilor str. 28, Bălți municipality	Boris Boincean, Director	+373 23133151	icccselectia@gmail.com
Bălți branch of the Chamber of Commerce and Industry of the Republic of Moldova	Victoriei str. 6, Bălți municipality	Galina Codița Director	+373 23130077 +373 23129154	balti@chamber.md
Employment department of Bălți municipality	Puskin str. 16, Bălți municipality	Ilie Chitac, Chief of department	+373 23120522	aofm.balti@anofm.md
Public services agency, Bălți	Piața Vasile Alecsandri, nr.8, Bălți municipality	Vitalie Țurcanu, director	+373 23152974 +373 23152973 +373 23152979	asp@asp.gov.md

The data in this profile were collected from the NBS (Regional Statistics)

<https://statbank.statistica.md/PxWeb/> and are reflected according to the methodology presented on the link

https://statbank.statistica.md/Metodologie_ASA_teritorial.pdf:

Section 1.4. of the methodology refers to the fact that the administrative data sources "Present all the entities that keep records according to the simplified or complete double entry accounting system (over 50 thousand enterprises)".





Agenția de
Dezvoltare Regională
Nord



cooperare
germană
DEUTSCHE ZUSAMMENARBEIT

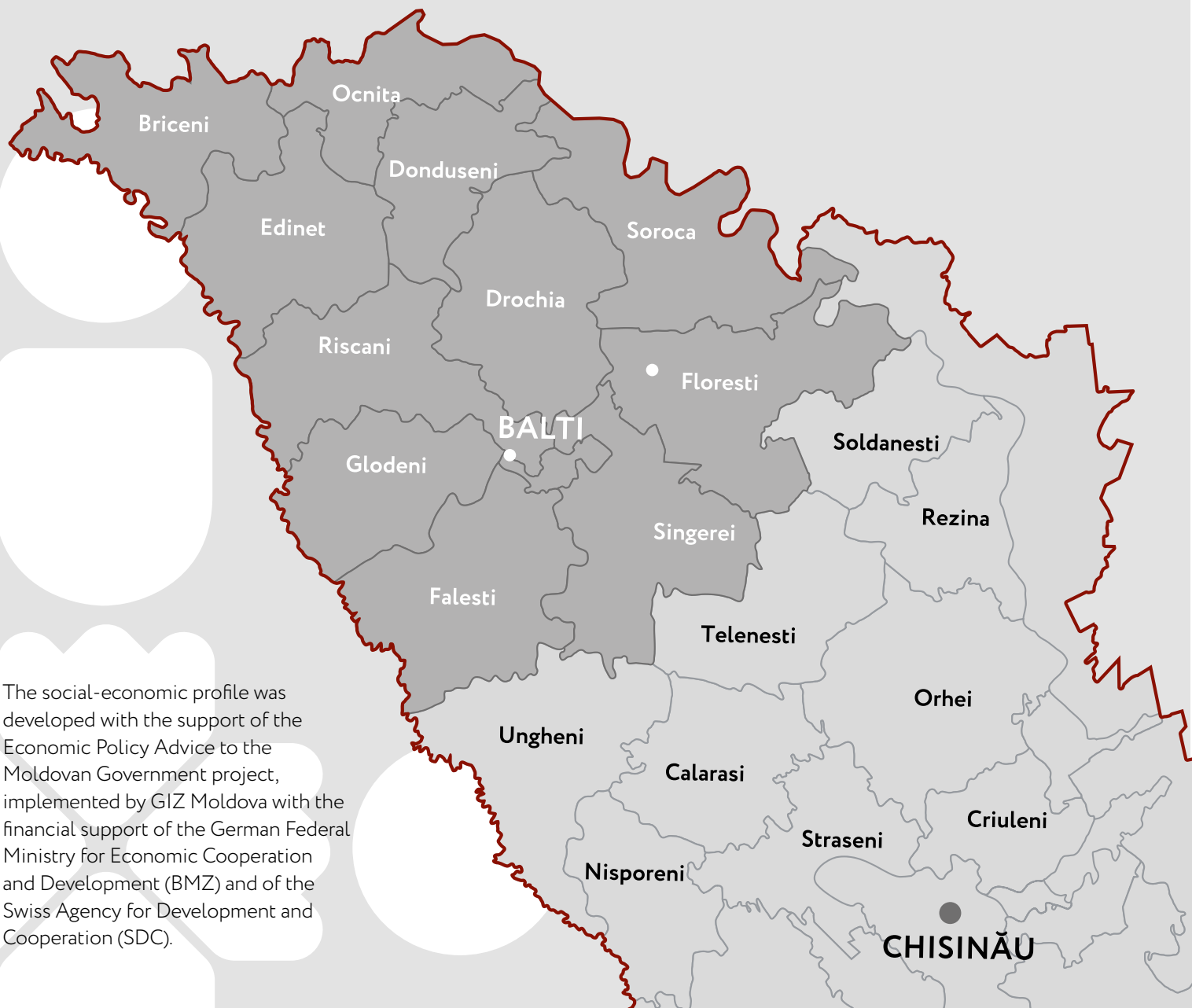
Implemented by

giz Deutsche Gesellschaft
für Internationale
Zusammenarbeit (GIZ) GmbH



Schweizerische Eidgenossenschaft
Confédération suisse
Confederazione Svizzera
Confederaziun svizra

Swiss Agency for Development and Cooperation SDC
Agenția Elvețiană pentru Dezvoltare și Cooperare
Швейцарское управление по развитию и сотрудничеству



The social-economic profile was developed with the support of the Economic Policy Advice to the Moldovan Government project, implemented by GIZ Moldova with the financial support of the German Federal Ministry for Economic Cooperation and Development (BMZ) and of the Swiss Agency for Development and Cooperation (SDC).